

## Further Exploration Update - CdB Copper Project

- Phase 2 drilling has now finished with a total of ninety-three (93) holes having been drilled for 5,690.70 metres.
- Holes are largely to a depth of about 60 metres and are targeting near to surface mineralisation. Of the 93 holes drilled, four holes of between 120m and 150m were drilled for structural and hydrological purposes.
- Phase 2 drilling to date has focussed on Areas 3, 4 and 5, with forty-nine (49) holes drilled in Area 3 for 2,888.70 metres, thirty-three (33) holes drilled in Area 4 for 1,818.80 metres and eleven (11) holes drilled in Area 5 for 983.30 metres.
- 779 samples have been prepared and despatched for assay.
- Topography survey covering ~16km<sup>2</sup> completed in late November 2019.
- Phase 3 drilling will commence following the wet season in 2020. Planning of Phase 3 will commence in earnest upon receipt of assay information from Phase 2 drilling.

VDM Group Limited (**VDM** or the **Company**) (ASX: VMG) is pleased to advise that it Phase 2 drilling is now complete at its Cachoeiras do Binga (**CdB**) Copper Project in Angola (65% owned in VDM).

The CdB Project is located ~385km south of the Angolan capital city of Luanda; and covers 3,854kms<sup>2</sup>. It is ~32kms from East to West and ~129kms from North to South; and shows characteristics of a typical central African sediment-hosted copper deposit.

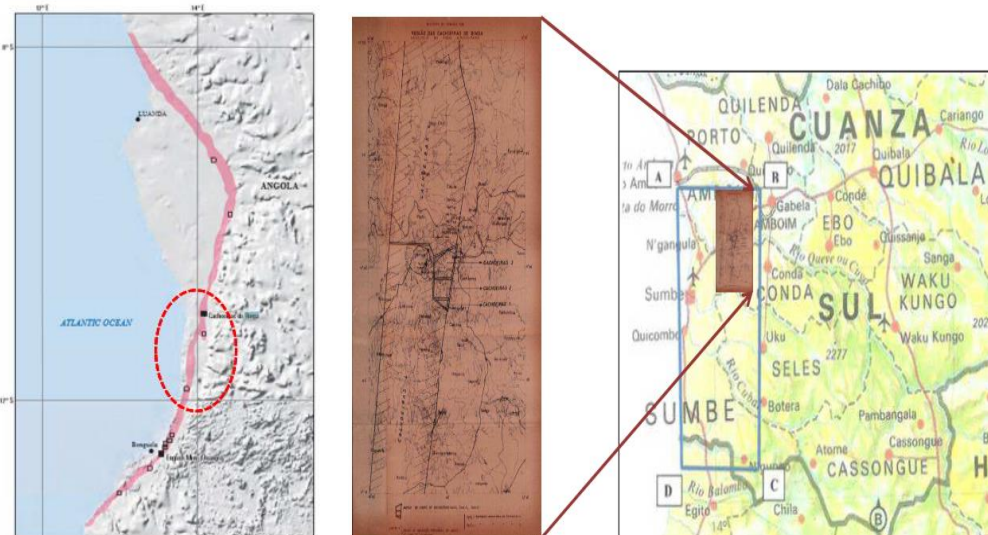


Figure 1: Location Map - CdB Project

### BOARD & MANAGEMENT

Mr Luk Hiuming  
NON-EXECUTIVE CHAIRMAN

Dr Dongyi Hua  
EXECUTIVE DIRECTOR  
OF MINING

Mr Michael Fry  
DIRECTOR  
COMPANY SECRETARY

### REGISTERED OFFICE

Suite 2, Level 2, 123 Adelaide  
Terrace, East Perth, WA 6004

### POSTAL ADDRESS

PO Box 3347  
East Perth, WA 6892

### CONTACT DETAILS

Tel: (08) 9221 6739

### WEBSITE

[vdmgroup.com.au](http://vdmgroup.com.au)

### SHARE REGISTRY

Computershare Investor  
Services Pty Limited  
GPO Box 2975  
Melbourne, VIC 3001  
Tel: 1300 850 505

### ASX CODE

VMG

## Phase 2 Drilling

The Phase Two Drilling Program commenced on 6 May 2019 and was recently finished with a total of ninety-three (93) diamond core holes having been drilled for a cumulative total of 5,690.70 metres.

A map of the location of the drill-holes overlaid on the tenement blocks follows at Figure 2 in Appendix A.

In total, combining Phases 1 and 2, the Company has now completed a total of one hundred and thirty-four (134) holes for 9,594 metres, as follows:

Year	Area	Hole	Metres
2018	1	1	36.20
	2	2	150.40
	3	17	1,213.90
	4	12	1,145.20
	5	9	1,357.50
	<b>Sub Total</b>	<b>41</b>	<b>3,903.30</b>
2019	1		
	2		
	3	49	2,888.70
	4	33	1,818.80
	5	11	983.30
	<b>Sub Total</b>	<b>93</b>	<b>5,690.70</b>
Total	1	1	36.20
	2	2	150.40
	3	66	4,102.60
	4	45	2,964.00
	5	20	2,340.80
	<b>Grand Total</b>	<b>134</b>	<b>9,594.10</b>

779 samples have been prepared for assay and despatched.

### For further information please contact:

Michael Fry  
 Company Secretary  
 VDM Group Limited  
 (08) 9221 6739

### **Forward looking statements**

Information included in this release constitutes forward-looking statements. Often, but not always, forward looking statements can generally be identified by the use of forward looking words such as “may”, “will”, “expect”, “intend”, “plan”, “estimate”, “anticipate”, “continue”, and “guidance”, or other similar words and may include, without limitation, statements regarding plans, strategies and objectives of management, anticipated production or construction commencement dates and expected costs or production outputs.

Forward looking statements inherently involve known and unknown risks, uncertainties and other factors that may cause the Company’s actual results, performance and achievements to differ materially from any future results, performance or achievements. Relevant factors may include, but are not limited to, changes in commodity prices, foreign exchange fluctuations and general economic conditions, increased costs and demand for production inputs, the speculative nature of exploration and project development, including the risks of obtaining necessary licences and permits and diminishing quantities or grades of reserves, political and social risks, changes to the regulatory framework within which the company operates or may in the future operate, environmental conditions including extreme weather conditions, recruitment and retention of personnel, industrial relations issues and litigation.

Forward looking statements are based on the Company and its management’s good faith assumptions relating to the financial, market, regulatory and other relevant environments that will exist and affect the Company’s business and operations in the future. The Company does not give any assurance that the assumptions on which forward looking statements are based will prove to be correct, or that the Company’s business or operations will not be affected in any material manner by these or other factors not foreseen or foreseeable by the Company or management or beyond the Company’s control.

Although the Company attempts and has attempted to identify factors that would cause actual actions, events or results to differ materially from those disclosed in forward looking statements, there may be other factors that could cause actual results, performance, achievements or events not to be as anticipated, estimated or intended, and many events are beyond the reasonable control of the Company. Accordingly, readers are cautioned not to place undue reliance on forward looking statements. Forward looking statements in these materials speak only at the date of issue. Subject to any continuing obligations under applicable law or any relevant stock exchange listing rules, in providing this information the company does not undertake any obligation to publicly update or revise any of the forward-looking statements or to advise of any change in events, conditions or circumstances on which any such statement is based.

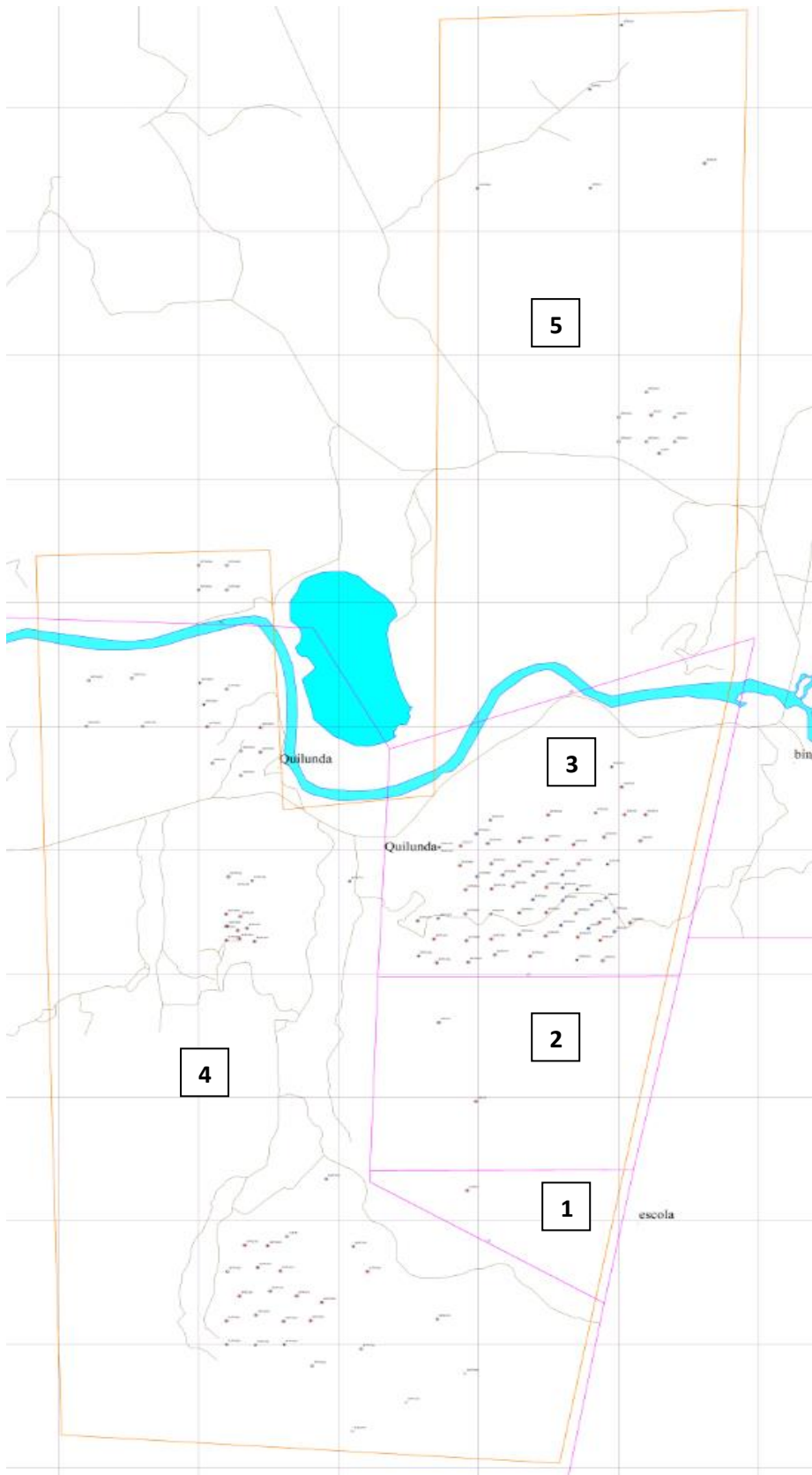


Figure 2: Phase 2 (2019) Drill Plan Overlaid on Tenement Blocks (Areas 1 to 5)



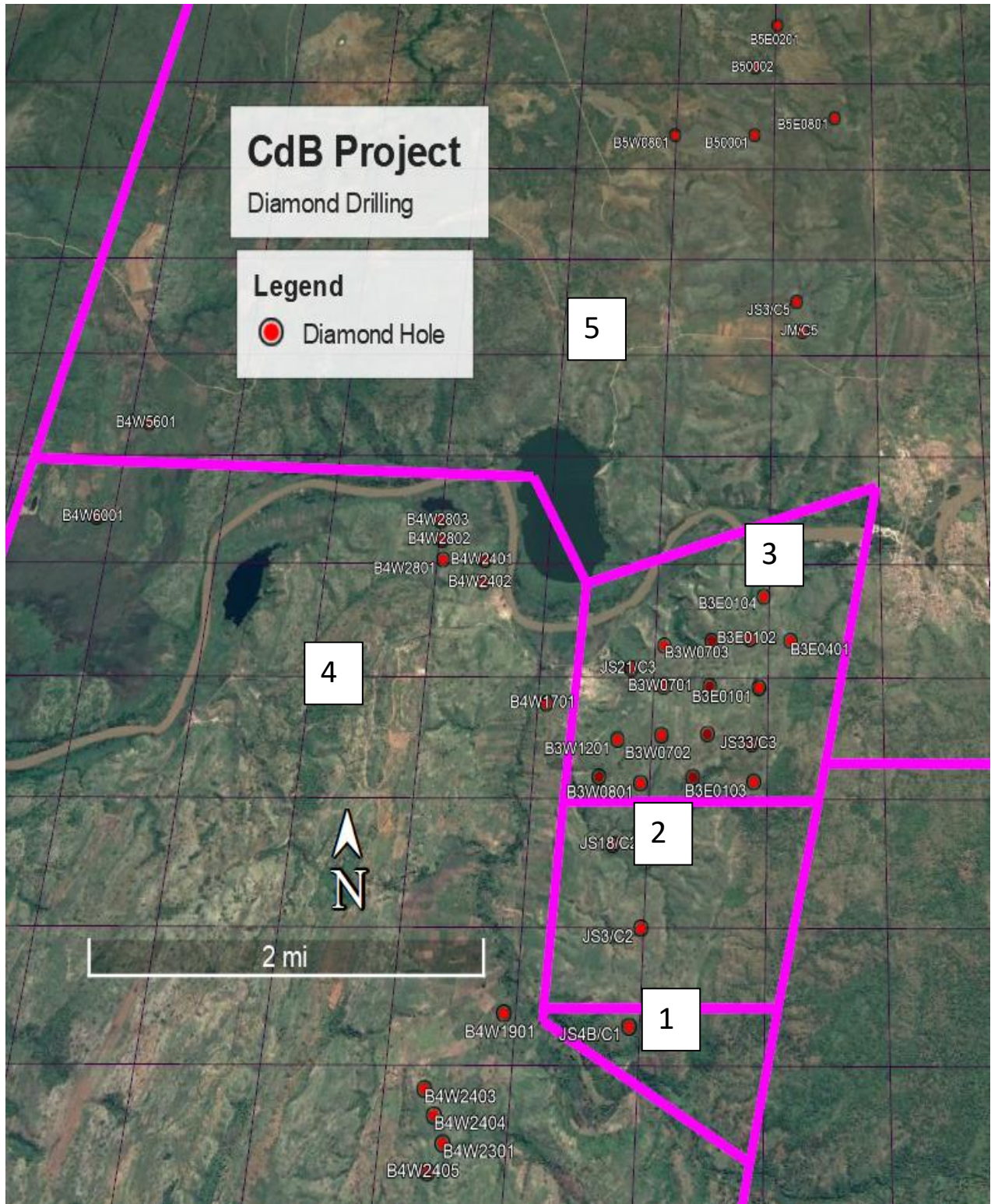


Figure 3: Phase One Drill Plan Overlaid on Tenement Blocks (Areas 1 to 5)

**Table 1: Information about the drill hole locations****Diamond Drilling in 2018\_Phase 1- drilled holes**

No	Hole_ID	Depth (m)	Northing (m)	Easting (m)	Relative Level (m)	Area	Type
1	B50001	236.39	8789351	399799	80	5	DD
2	B50002	241.59	8790150	399793	83	5	DD
3	B5W0801	264.61	8789348	398991	93	5	DD
4	JS3_C5	124.75	8787515	400233	116.67	5	DD
5	JM_C5	121.51	8787206	400290	118.52	5	DD
6	JS33_C3	81.64	8783412	399865	166.76	3	DD
7	JS29_C3	160.27	8783892	399491	144.65	3	DD
8	JS21_C3	101.65	8784038	398868	108.44	3	DD
9	B4W1701	121.2	8783739	398095	12.72	3	DD
10	B4W1901	161.38	8781431	397913	19.17	4	DD
11	B4W2401	113.63	8784981	397416	55.84	4	DD
12	B4W2402	74.47	8784806	397421	99.2	4	DD
13	B4W2801	273.14	8784995	397012	84.72	4	DD
14	B4W2802	31.42	8785174	397036	74.26	4	DD
15	B4W2803	39.04	8785349	397007	61.7	4	DD
16	B4W2403	71.22	8780803	397330	90	4	DD
17	B4W2404	64.23	8780622	397423	101	4	DD
18	JS18_C2	78.14	8782603	398715	76.85	2	DD
19	B4W2301	63.21	8780430	397511	104	4	DD
20	JS4B_C1	36.21	8781245	398919	149	1	DD
21	JS3_C2	72.3	8781966	398981	140	2	DD
22	B4W2405	66.97	8780238	397410	122.43	4	DD
23	B3W1201	47.24	8783445	398712	130.48	3	DD
24	B3W0702	50.68	8783481	399087	148.44	3	DD
25	B3W0701	82.08	8783888	399091	130	3	DD
26	B3W0301	69.15	8783493	399483	168	3	DD
27	B3W1202	40.49	8783141	398570	107	3	DD
28	B3W0703	47.25	8784239	399084	145.14	3	DD
29	B3W0401	81.13	8783139	399368	129.94	3	DD
30	B3W0801	71.29	8783091	398926	123.45	3	DD
31	B3E0101	43.8	8783882	399920	161.04	3	DD
32	B3W0302	69.94	8784281	399498	159	3	DD
33	B3E0102	58.56	8784296	399837	147.54	3	DD
34	B3E0103	83.48	8783093	399880	170.56	3	DD
35	B3E0104	44.13	8784663	399953	133.24	3	DD
36	B3E0401	81.13	8784284	400192	176	3	DD
37	B5E0801	61.48	8789550	400614	140	5	DD
38	B5E0201	71.29	8790669	400021	82.14	5	DD
39	B4W6001	65.3	8785376	393867	5.04	4	DD
40	B5W5601	98.48	8786270	394187	7.84	5	DD
41	B5E0901	137.44	8799396	400700	41.54	5	DD
<b>TOTALS</b>		<b>3,903.31</b>					

**Table 1: Information about the drill hole locations****Diamond Drilling in 2019, Phase 2 drilled holes**

No	Hole_ID	Depth (m)	Northing (m)	Easting (m)	Relative Level (m)	Area	Type
1	B30001	68.62	8783359	399789	180	3	DD
2	B3E0105	45.45	8783609	399906	211	3	DD
3	B3E0106	78.17	8784102	399896	154	3	DD
4	B3E0107	80.51	8783268	399869	188	3	DD
5	B3E0201	49.28	8783330	399966	211	3	DD
6	B3E0302	62.37	8783410	400082	239	3	DD
7	B3E0303	67.86	8784284	400042	175	3	DD
8	B3E0307	40.70	8784072	400156	217	3	DD
9	B3E0308	56.22	8784507	400022	174	3	DD
10	B3W0101	66.36	8783491	399693	183	3	DD
11	B3W0102	51.46	8783887	399713	188	3	DD
12	B3W0104	61.05	8783109	399702	191	3	DD
13	B3W0105	44.10	8783674	399705	202	3	DD
14	B3W0106	58.00	8783268	399679	169	3	DD
15	B3W0107	86.43	8783295	399708	188	3	DD
16	B3W0201	85.04	8783388	399588	171	3	DD
17	B3W0202	41.18	8783585	399605	187	3	DD
18	B3W0203	48.67	8783681	399603	181	3	DD
19	B3W0204	51.16	8783799	399602	177	3	DD
20	B3W0205	61.92	8783976	399592	160	3	DD
21	B3W0303	61.99	8783676	399478	193	3	DD
22	B3W0304	62.20	8784081	399487	137	3	DD
23	B3W0305	86.99	8783303	399479	201	3	DD
24	B3W0402	52.91	8783594	399389	194	3	DD
25	B3W0403	56.08	8783800	399378	156	3	DD
26	B3W0404	67.96	8783973	399384	141	3	DD
27	B3W04S01	56.18	8783886	399376	152	3	DD
28	B3W0501	42.81	8783490	399290	174	3	DD
29	B3W0502	68.26	8783874	399291	161	3	DD
30	B3W0504	44.09	8783705	399247	181	3	DD
31	B3W0505	73.70	8784067	399292	179	3	DD
32	B3W0506	48.42	8783315	399291	172	3	DD
33	B3W0602	50.10	8783587	399180	179	3	DD
34	B3W0603	49.68	8783798	399173	164	3	DD
35	B3W0604	74.40	8783990	399200	147	3	DD
36	B3W0704	47.01	8783684	399092	181	3	DD
37	B3W0705	71.18	8784052	399066	184	3	DD
38	B3W0706	47.12	8783309	399052	152	3	DD
39	B3W0707	56.64	8783147	399124	171	3	DD
40	B3W0803	46.66	8783783	399002	164	3	DD
41	B3W0804	73.80	8783959	398976	138	3	DD
42	B3W0901	64.42	8783483	398906	162	3	DD
43	B3W0902	36.75	8783872	398868	164	3	DD
44	B3W0903	65.23	8783266	398906	166	3	DD
45	B3W0904	38.13	8783677	398907	162	3	DD

**Table 1: Information about the drill hole locations**

46	B3W1101	65.59	8783278	398681	157	3	DD
47	B3W1102	63.10	8783086	398701	140	3	DD
48	B3W1103	73.83	8783020	398722	129	3	DD
49	B3W1301	38.90	8783425	398565	147	3	DD
50	B4W0901	40.41	8779776	398908	192	4	DD
51	B4W1101	60.45	8780191	398712	169	4	DD
52	B4W1301	77.37	8779511	398512	203	4	DD
53	B4W1601	57.03	8780590	398206	163	4	DD
54	B4W1602	48.46	8779954	398127	178	4	DD
55	B4W1702	30.73	8780792	398105	121	4	DD
56	B4W1902	62.07	8780340	397879	150	4	DD
57	B4W2001	74.35	8780193	397800	184	4	DD
58	B4W2101	44.64	8780393	397700	125	4	DD
59	B4W2201	40.93	8780594	397584	108	4	DD
60	B4W2202	61.23	8780187	397607	161	4	DD
61	B4W2203	68.31	8779999	397610	186	4	DD
62	B4W2302	38.04	8780798	397493	89	4	DD
63	B4W2406	38.28	8779995	397405	144	4	DD
64	B4W2407	64.05	8783365	397345	111	4	DD
65	B4W2408	67.42	8783747	397387	118	4	DD
66	B4W2409	36.40	8783259	397400	79	4	DD
67	B4W2501	41.85	8780391	397292	105	4	DD
68	B4W2502	68.31	8783282	397291	123	4	DD
69	B4W2503	71.03	8783348	397279	123	4	DD
70	B4W2504	48.27	8783461	397298	103	4	DD
71	B4W2505	47.06	8784799	397299	115	4	DD
72	B4W2506	33.88	8784604	397297	107	4	DD
73	B4W25S01	85.29	8783113	397324	94	4	DD
74	B4W2601	32.05	8780191	397199	115	4	DD
75	B4W2602	35.70	8779995	397210	98	4	DD
76	B4W2603	73.83	8783383	397204	118	4	DD
77	B4W2604	53.21	8783782	397213	113	4	DD
78	B4W2605	71.31	8783268	397199	119	4	DD
79	B4W2606	61.27	8783480	397196	120	4	DD
80	B4W3201	76.67	8785000	396598	147	4	DD
81	B4W3301	71.03	8785395	396517	122	4	DD
82	B4W3602	37.88	8785376	396202	89	4	DD
83	B5E0202	90.35	8787500	400004	132	5	DD
84	B5E0203	99.12	8787290	400000	135	5	DD
85	B5E0401	112.59	8787300	400202	130	5	DD
86	B5E0402	99.21	8787702	400201	141	5	DD
87	B5E0601	120.87	8787300	400396	162	5	DD
88	B5E0602	119.65	8787499	400392	158	5	DD
89	B5E1601	155.99	8795774	401402	123	5	DD
90	B5W2601	45.76	8786114	397197	100	5	DD
91	B5W2602	52.11	8786303	397201	117	5	DD
92	B5W2801	36.20	8786108	397000	110	5	DD
93	B5W2802	51.40	8786302	397005	121	5	DD
<b>TOTALS</b>		<b>5,690.74</b>					